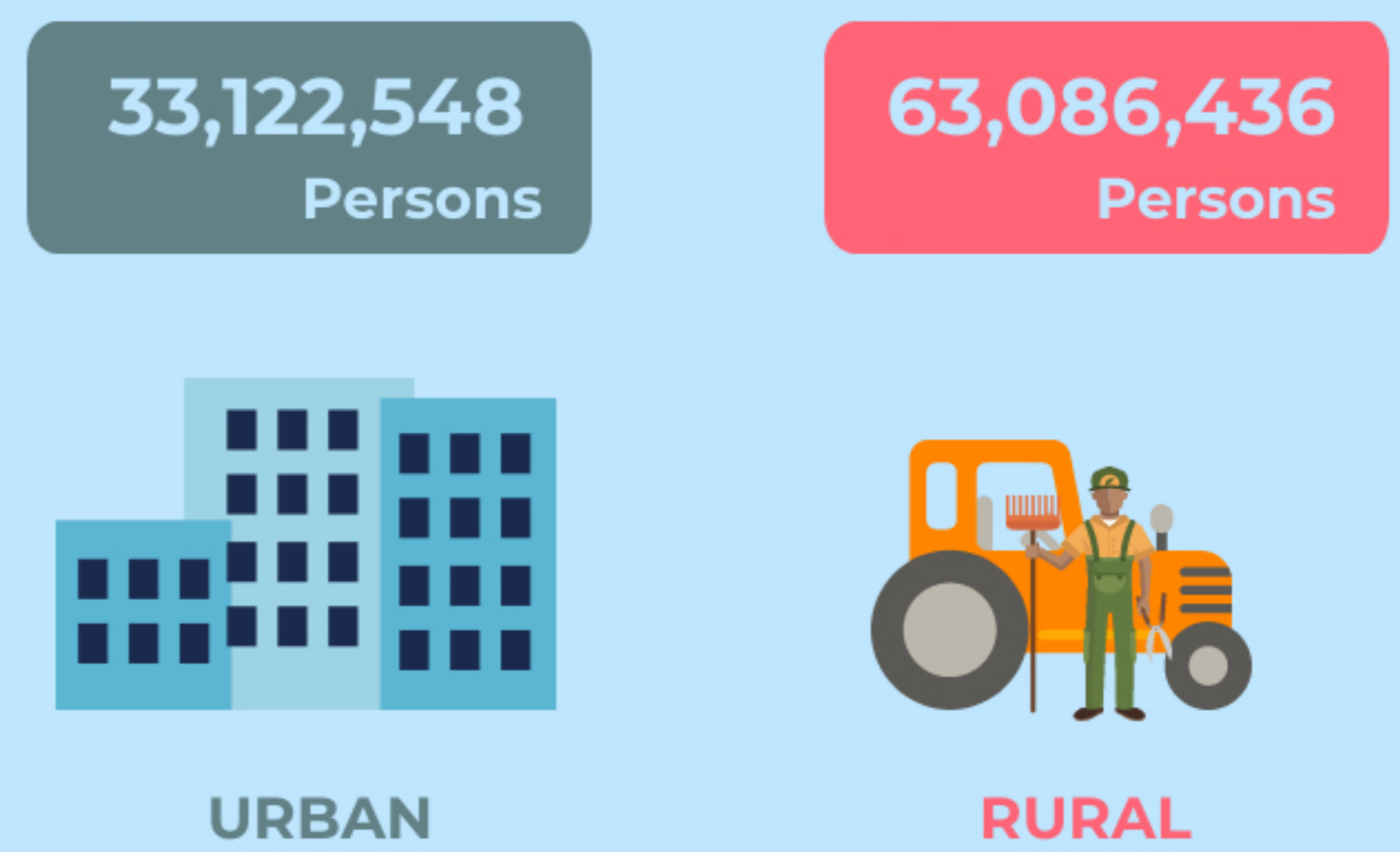
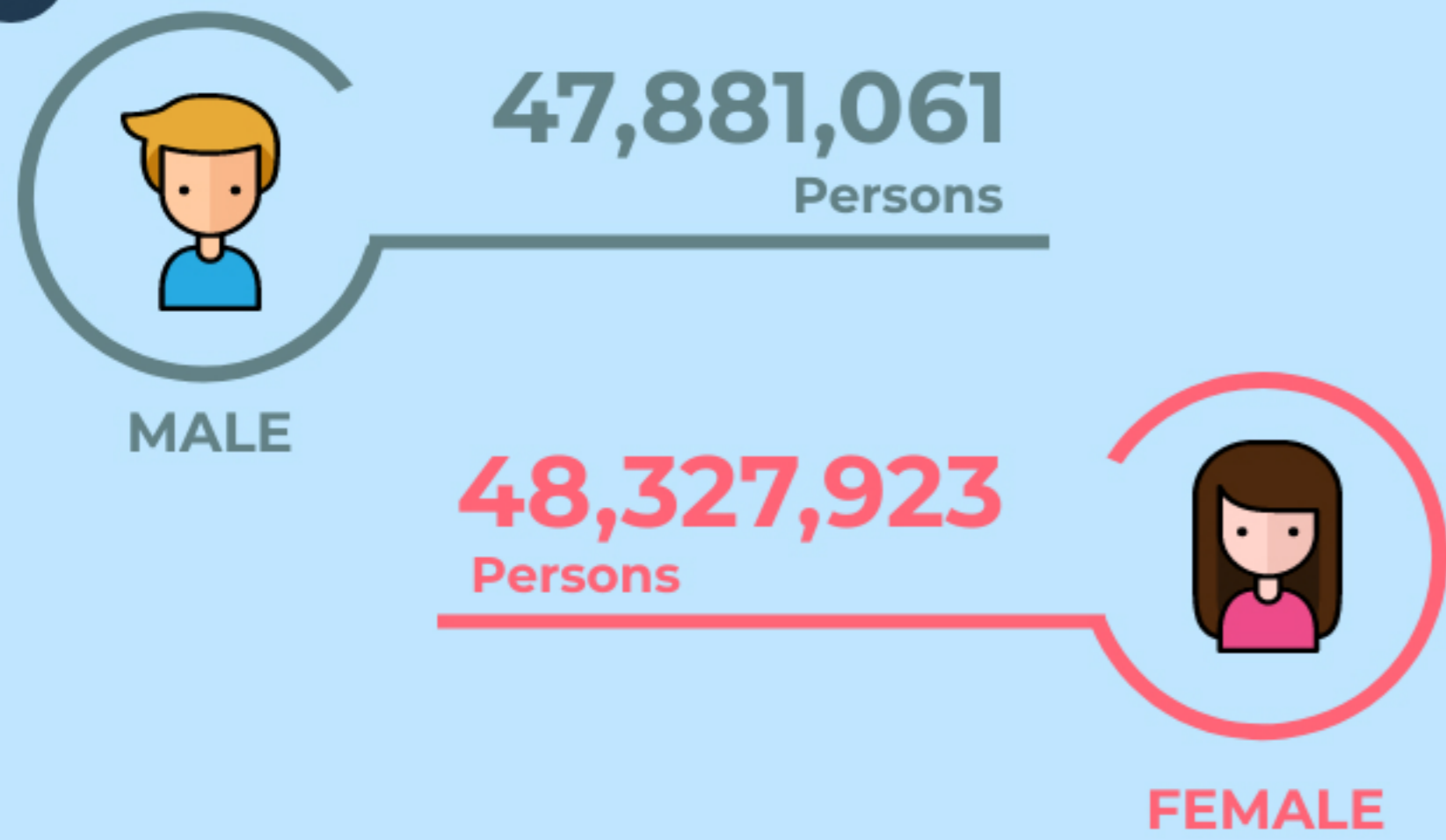


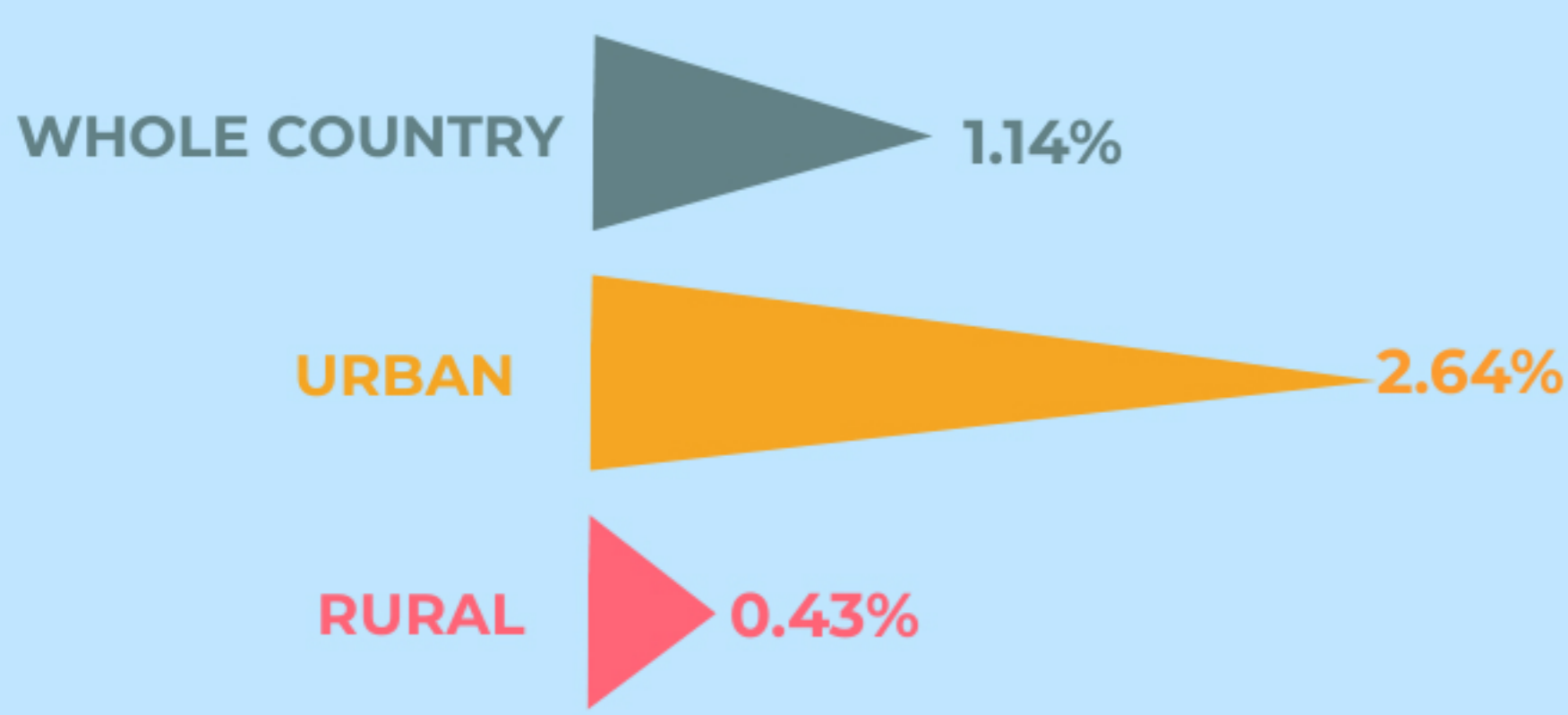
**96,208,984** persons

Viet Nam population at 00.00 hours of 1 April 2019

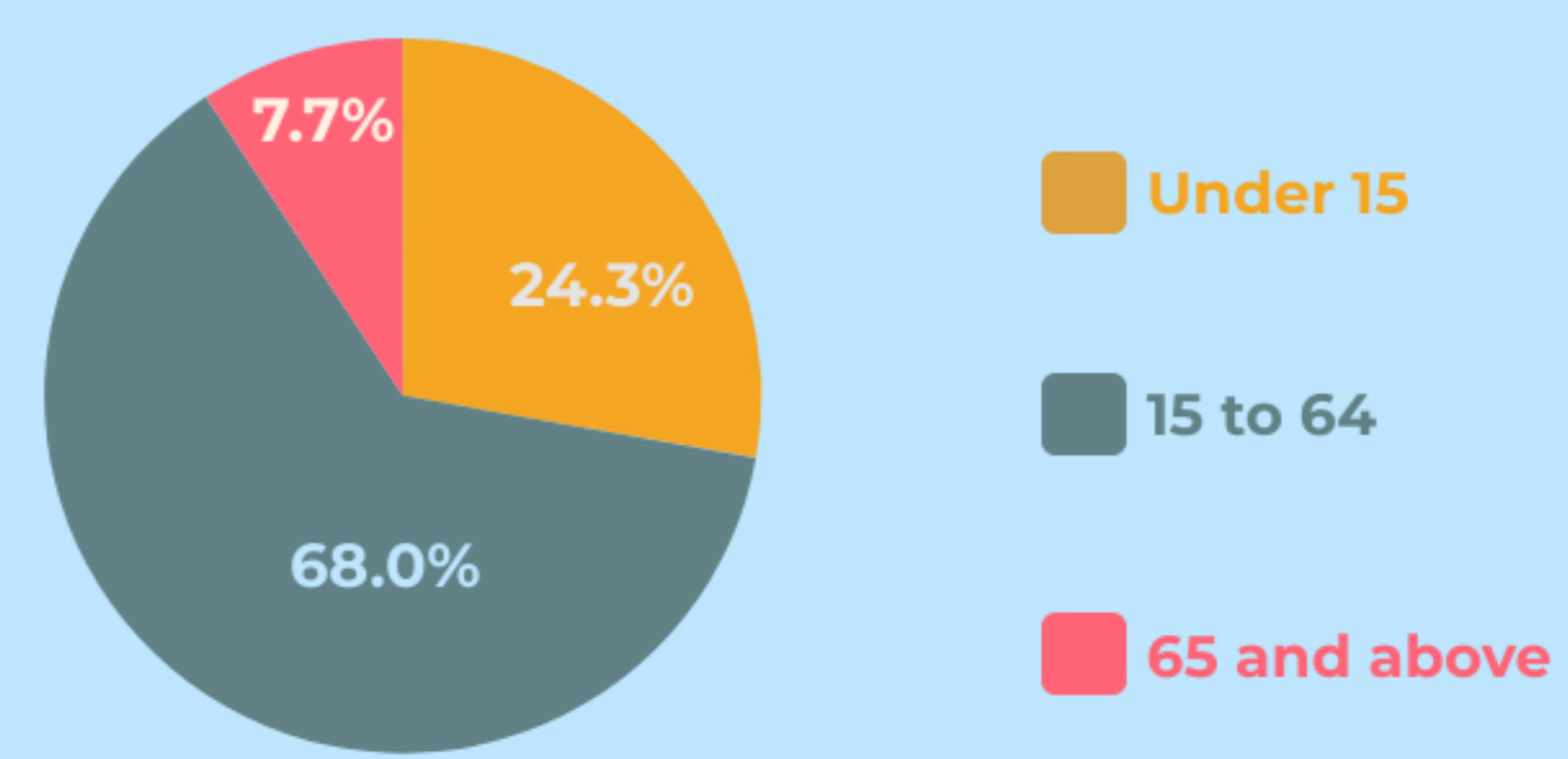
**1 POPULATION SIZE**



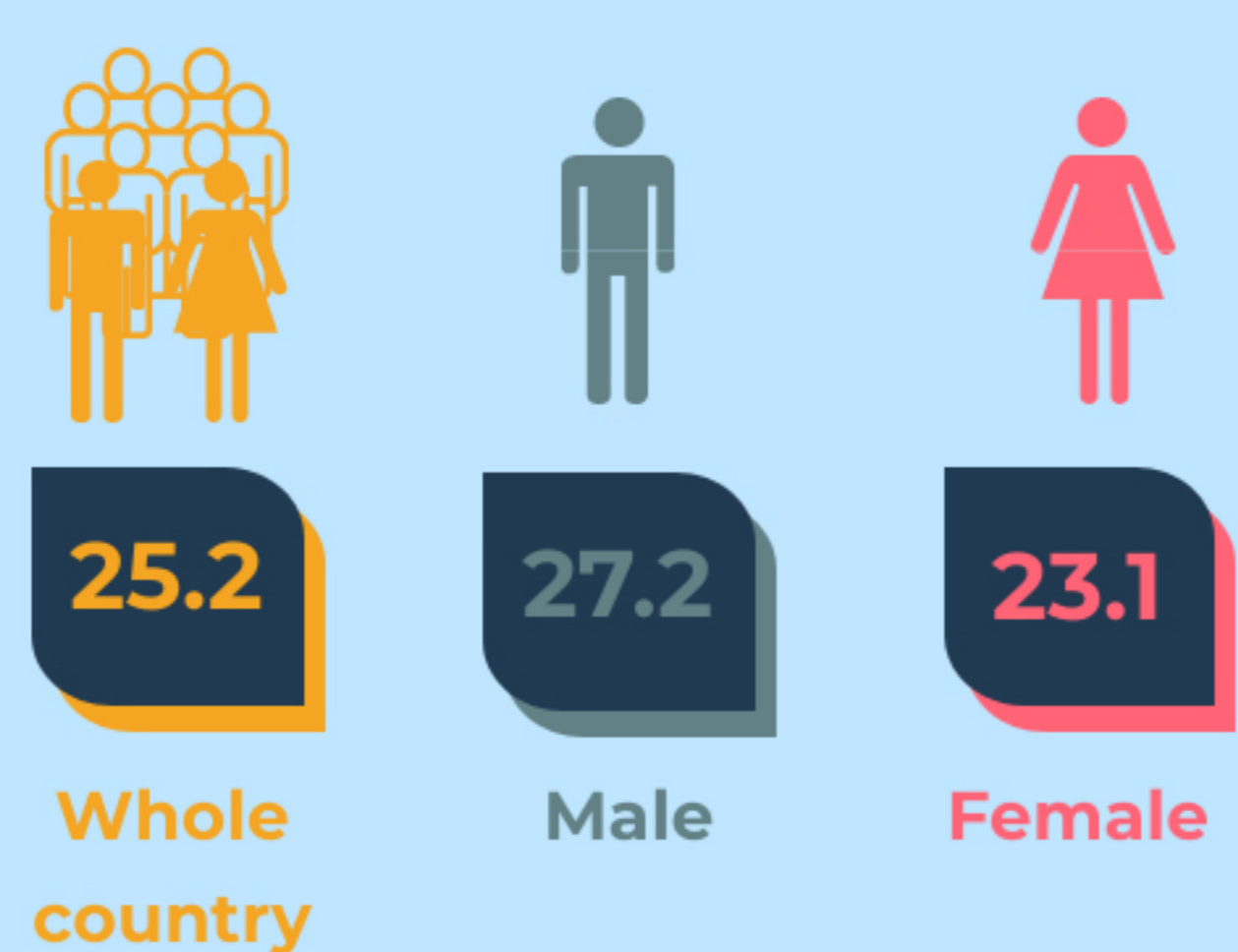
**2 AVERAGE ANNUAL POPULATION GROWTH RATE 2009 - 2019**



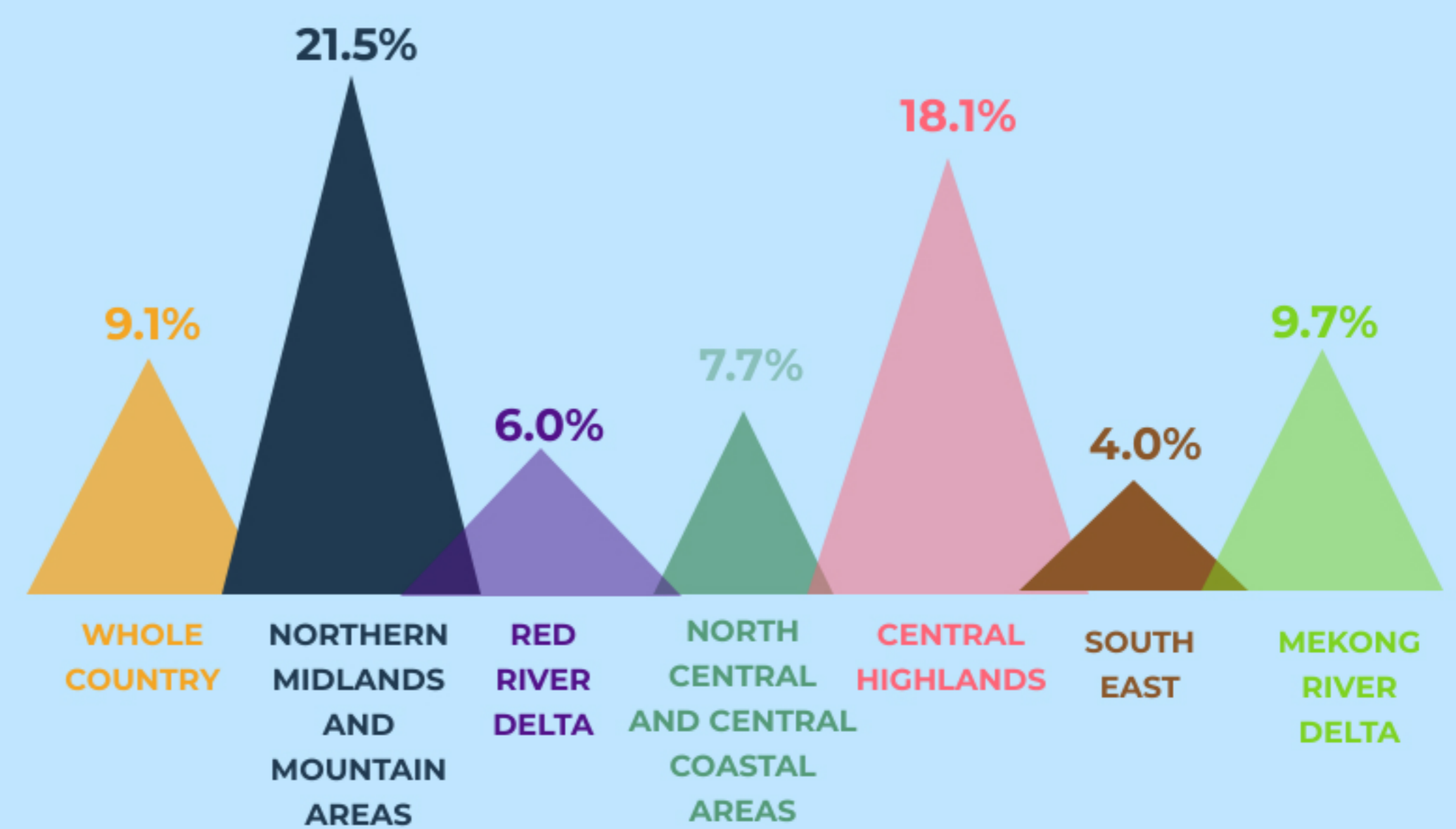
**3 PROPORTION OF POPULATION**



**4 SINGULATE MEAN AGE AT MARRIAGE**



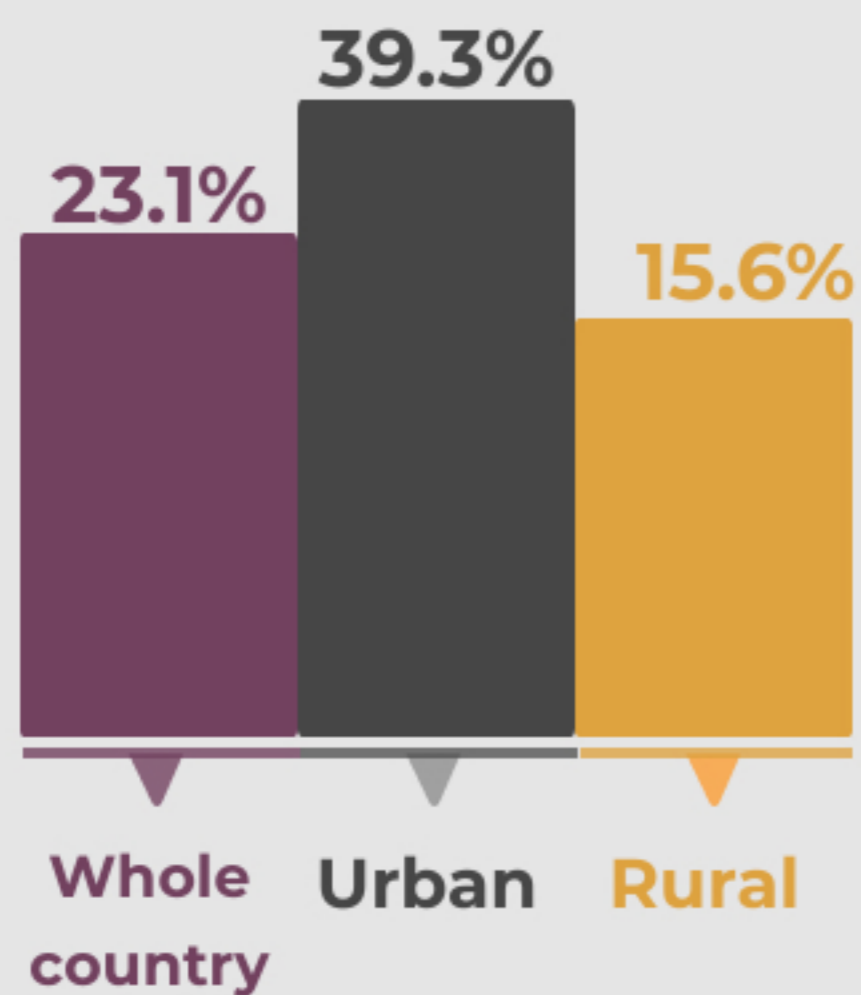
**5 PROPORTION OF WOMAN AGED 15-19 WHO WERE MARRIED THE FIRST TIME BEFORE AGE 18**



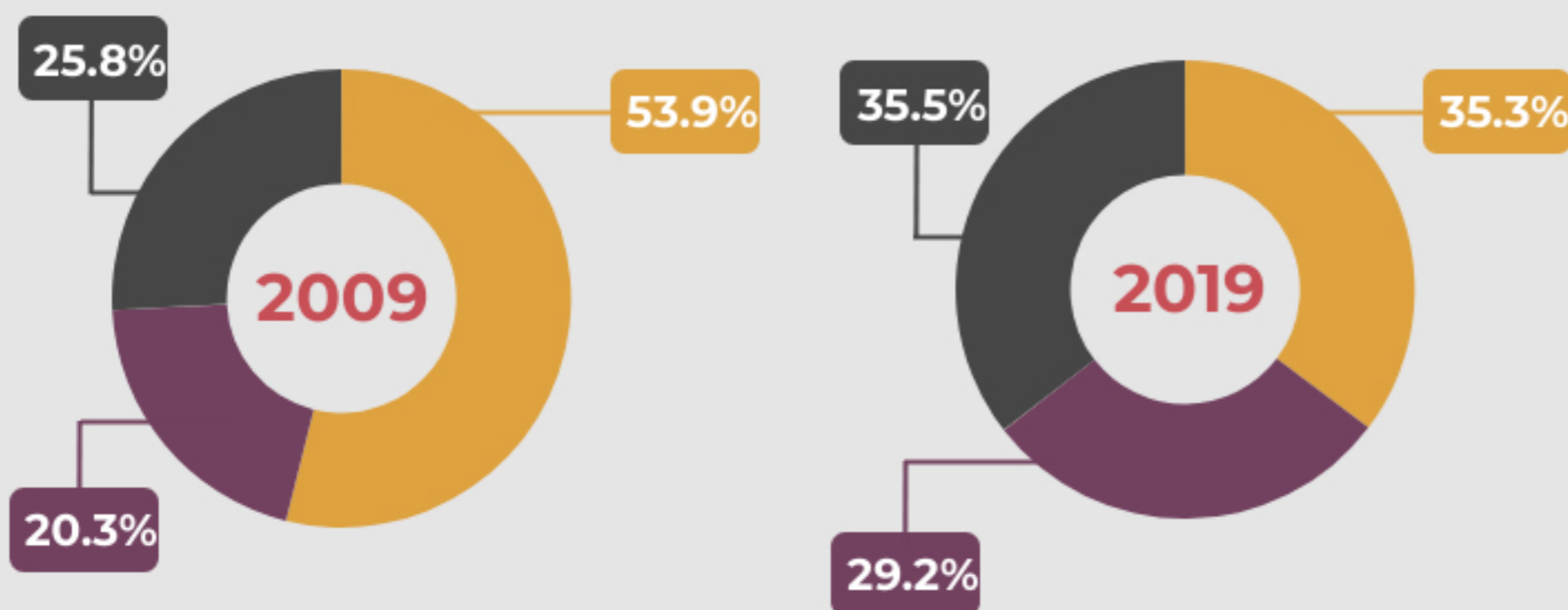


## LABOR

### 16 PROPORTION OF THE LABOR FORCE WITH TECHNICAL QUALIFICATIONS



### 17 DISTRIBUTION OF EMPLOYED LABOR BY MAIN INDUSTRIAL SECTORS

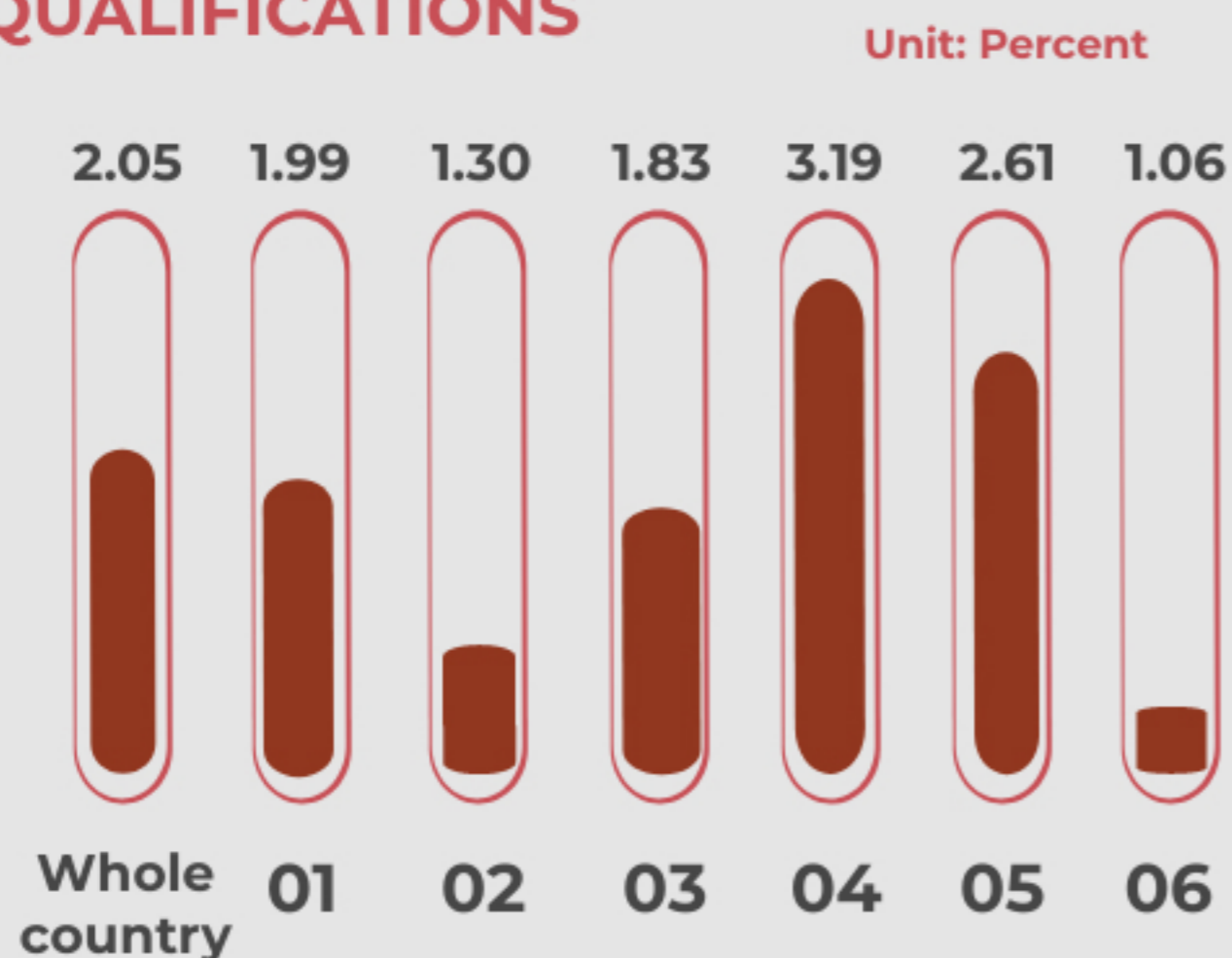


■ Agriculture, forestry and fishery

■ Industry and construction

■ Services

### 18 UNEMPLOYMENT RATE BY TECHNICAL QUALIFICATIONS



■ 01 No technical/ professional qualifications

■ 02 Primary

■ 03 Intermediate

■ 04 College

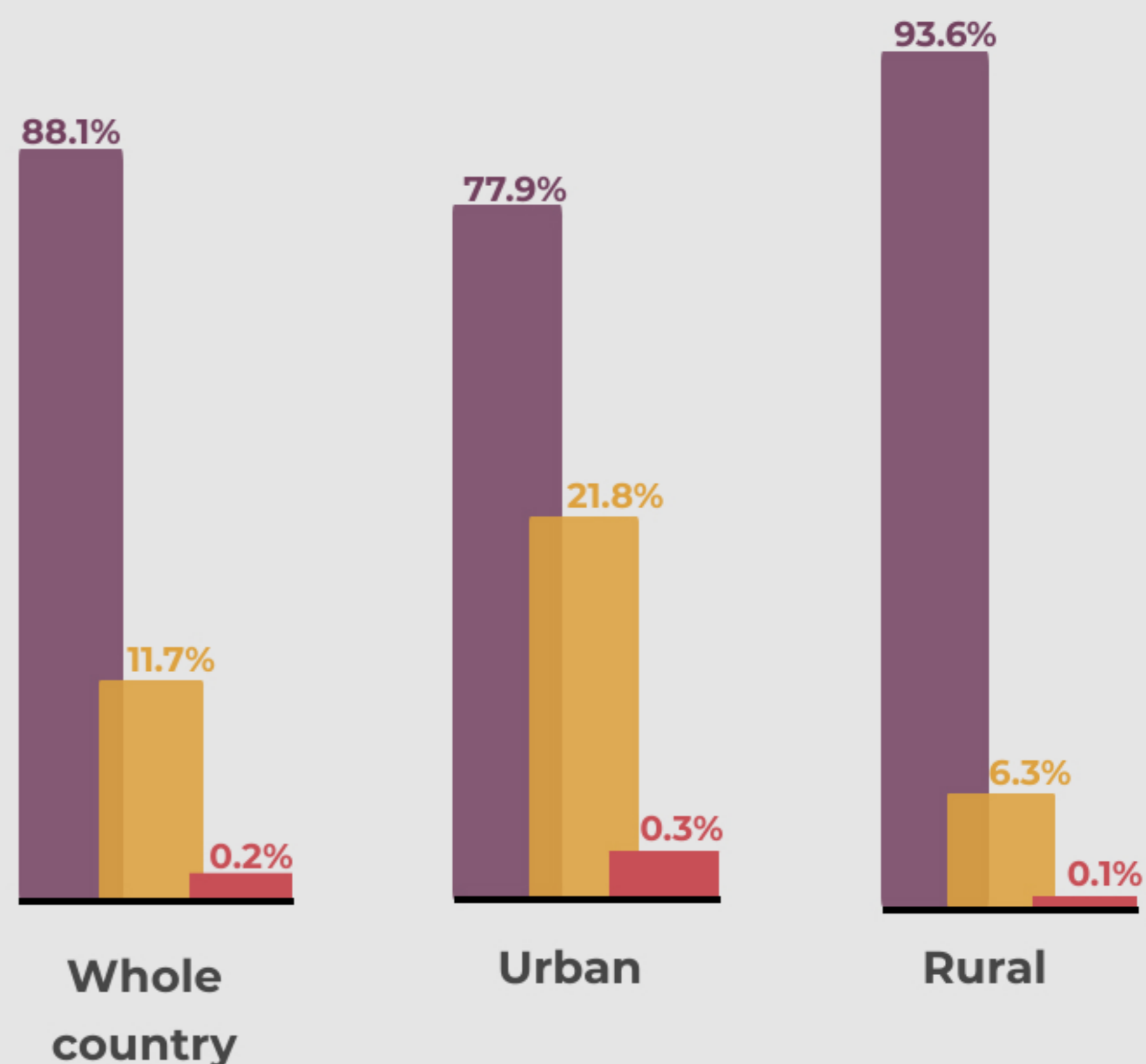
■ 05 University

■ 06 Postgraduate



## HOUSING

### 19 PROPORTION OF HOUSEHOLDS WITH A DWELLING BY OWNERSHIP

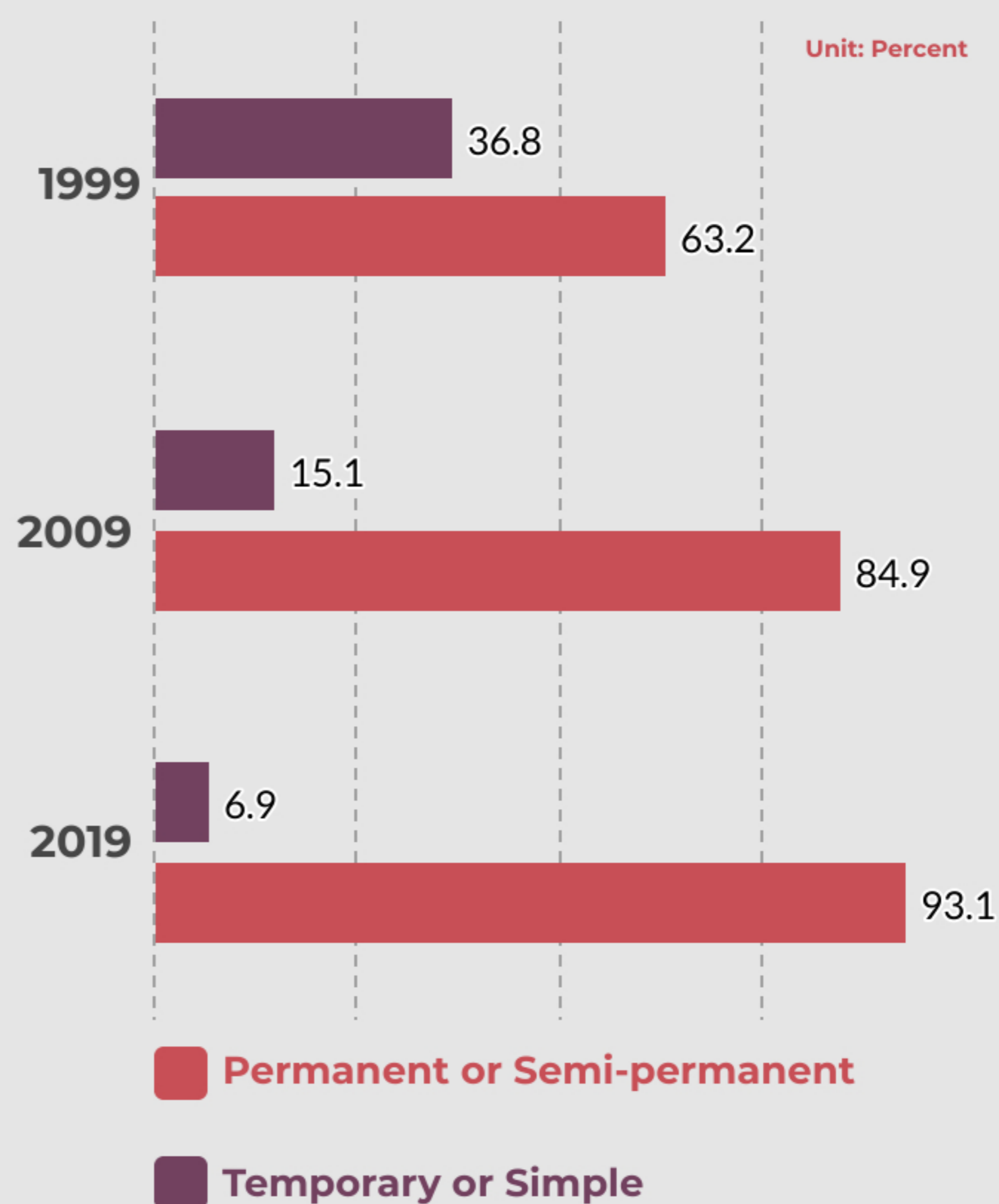


■ Own home

■ Rent/borrow

■ Other or Unclear ownership

### 20 DISTRIBUTION OF HOUSEHOLDS WITH HOUSING



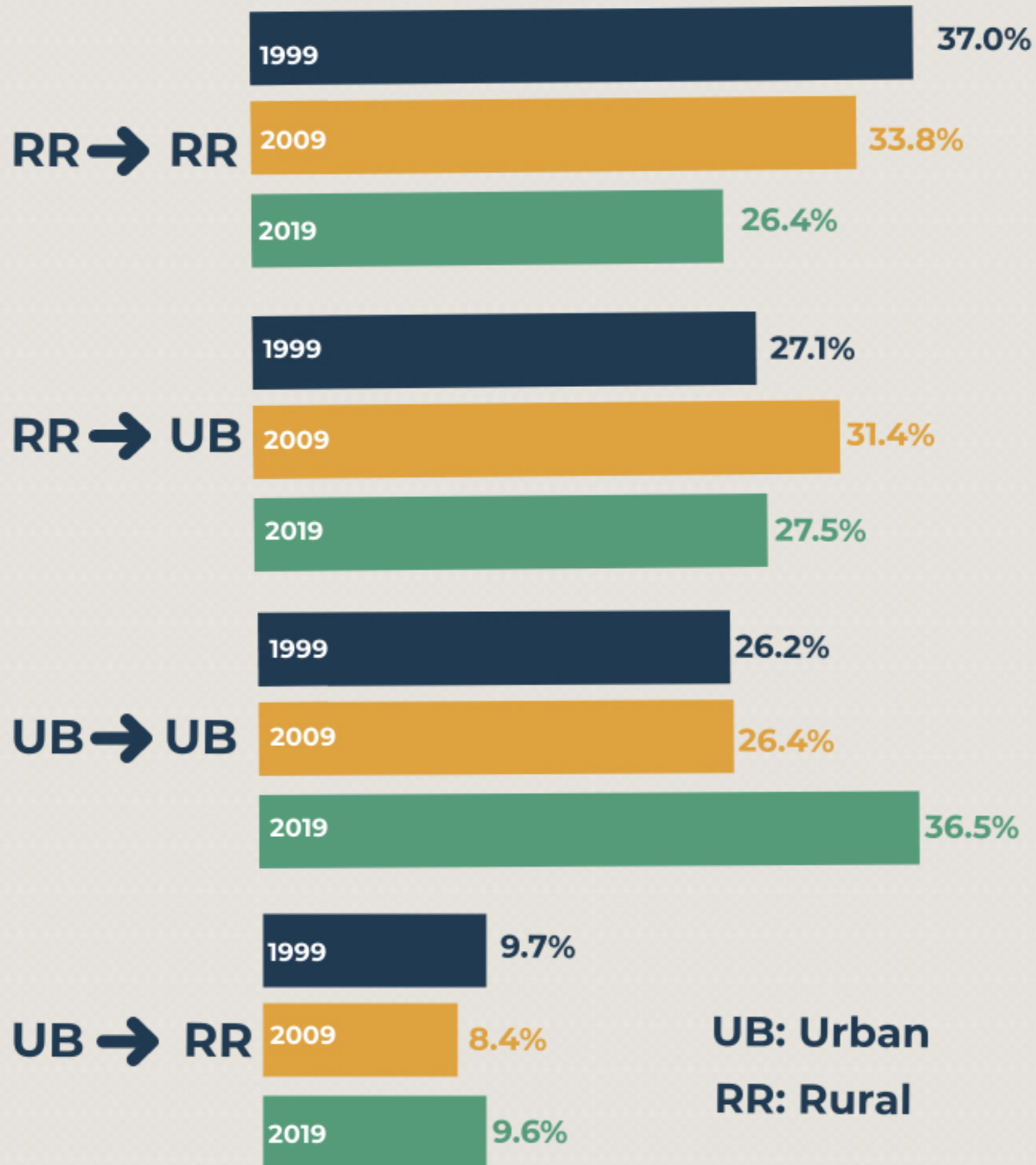
■ Permanent or Semi-permanent

■ Temporary or Simple

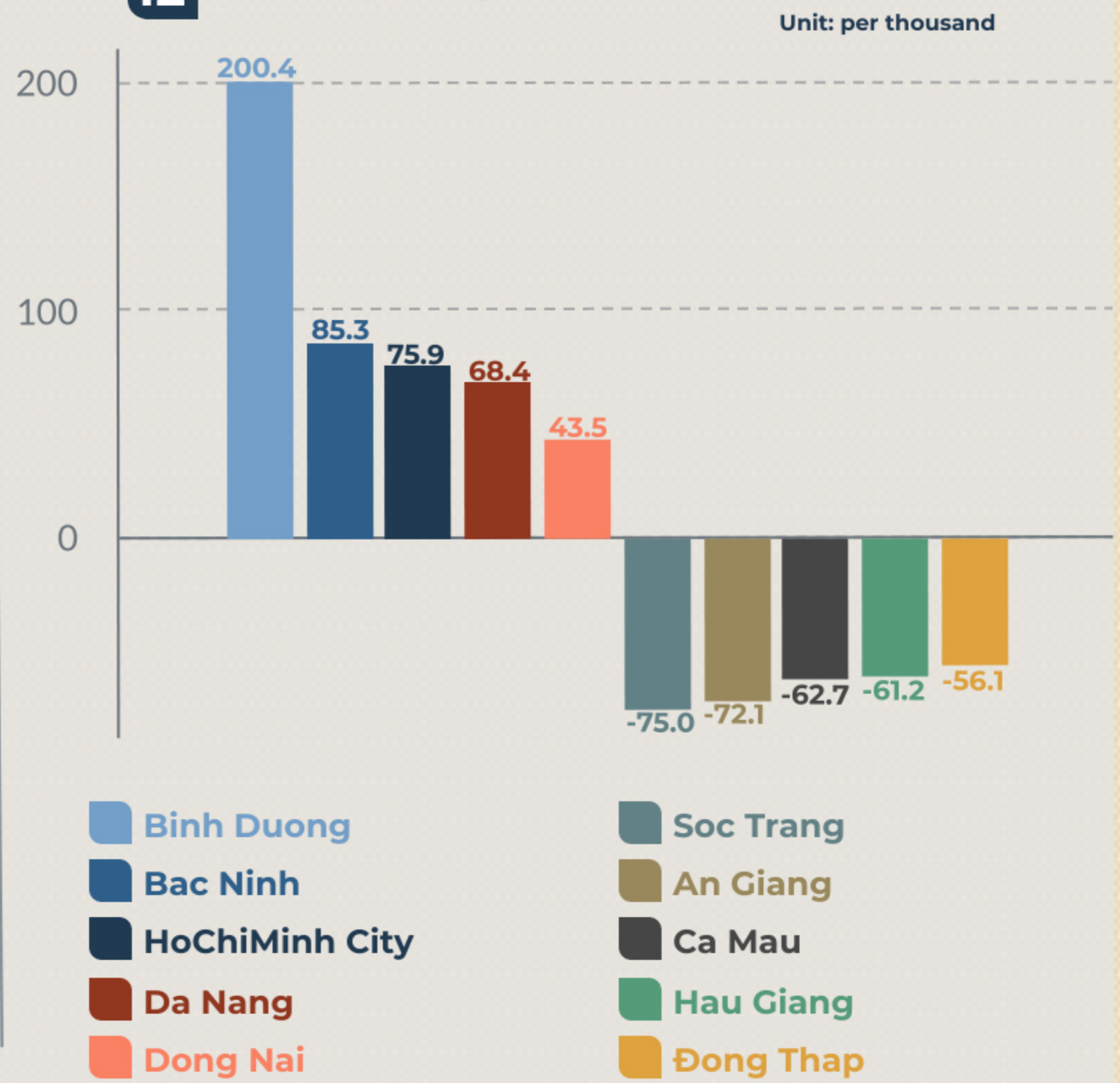


# MIGRATION

## 11 MIGRATION FLOW

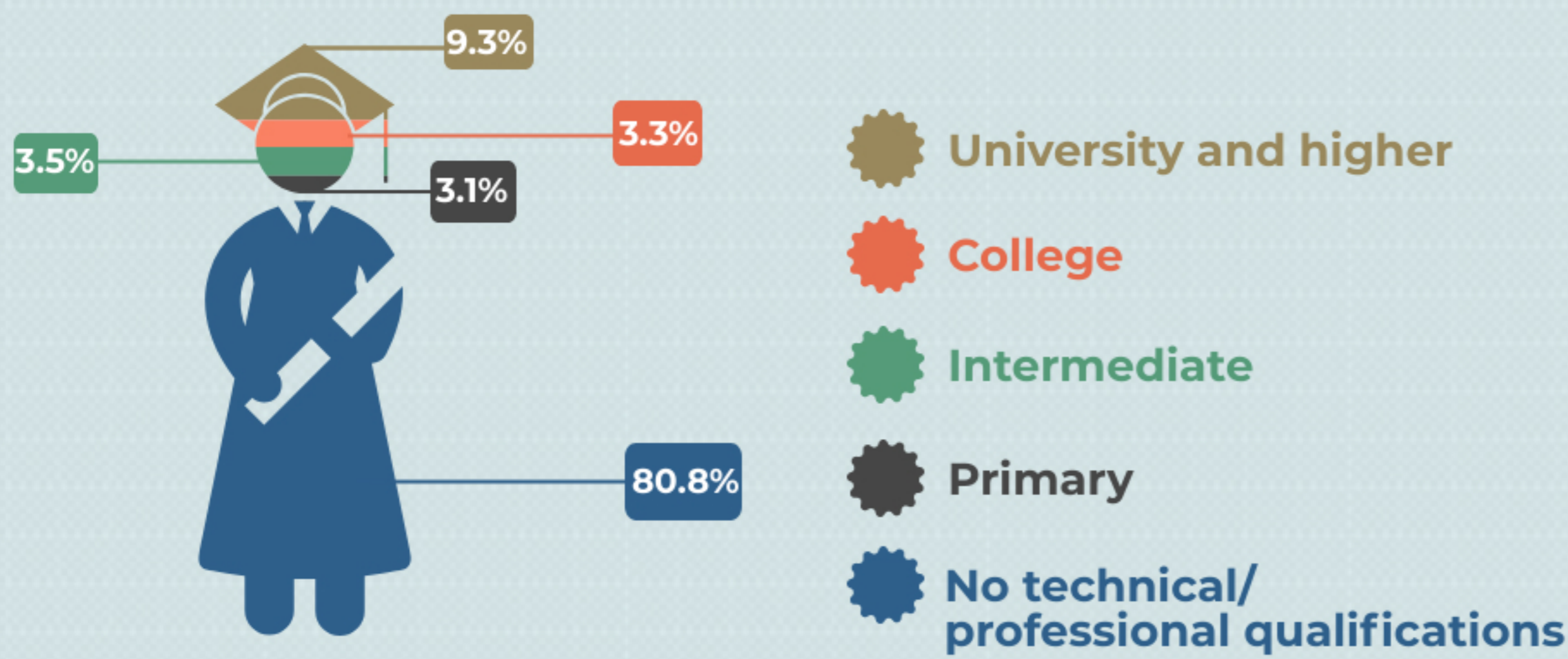


## 12 NET MIGRATION RATE

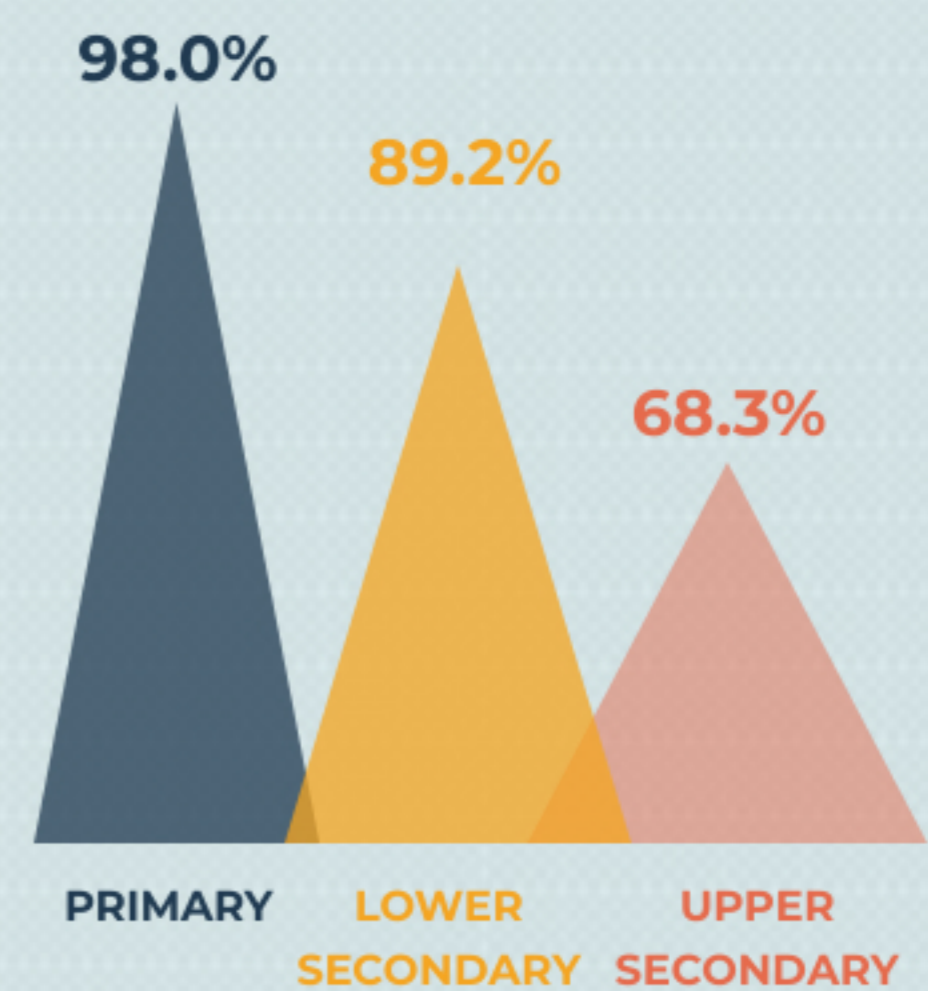


# EDUCATION

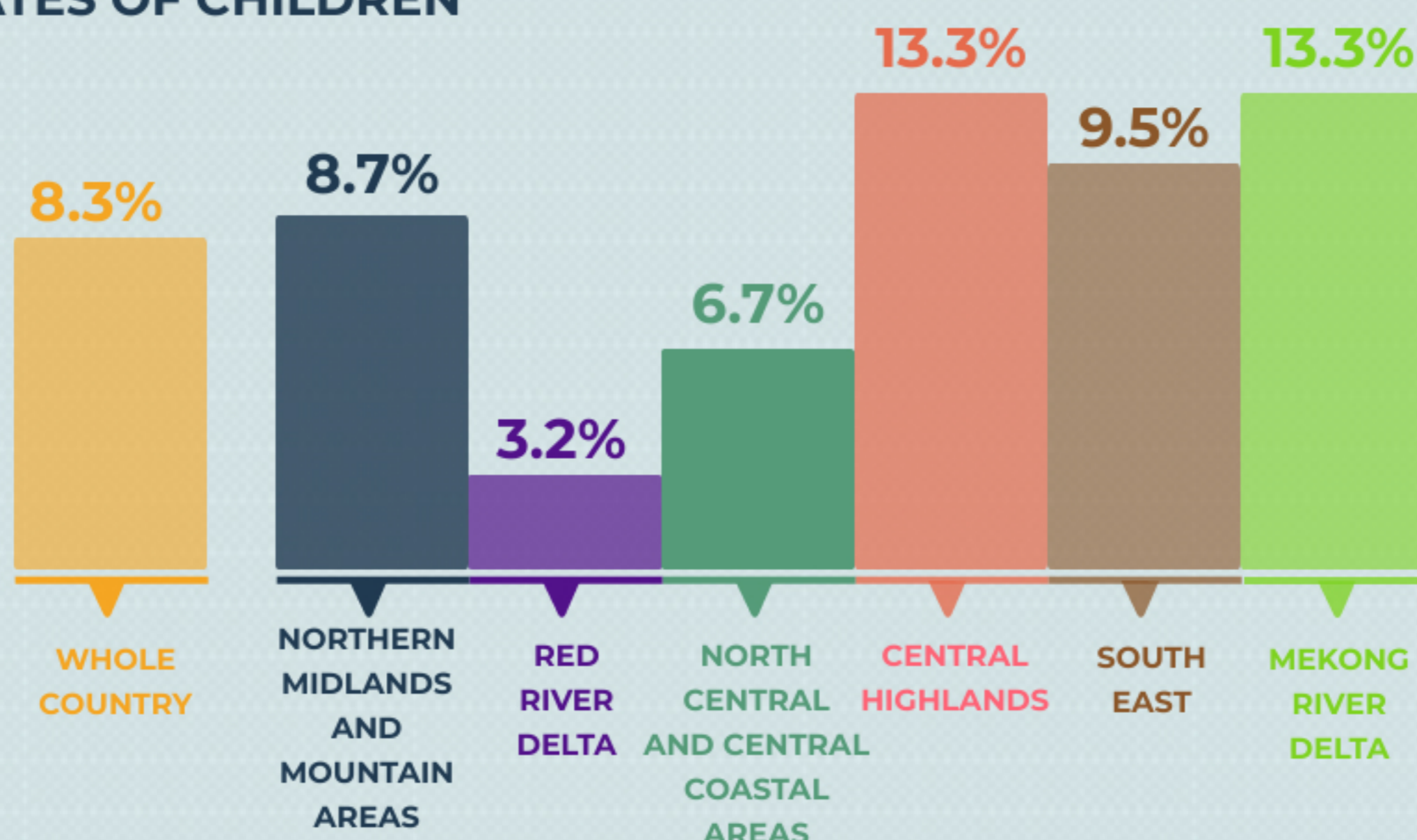
## 13 PROPORTION OF PEOPLE AGED 15 AND OLDER BY TECHNICAL/PROFESSIONAL QUALIFICATIONS



## 14 NET ENROLMENT RATES



## 15 OUT-OF-SCHOOL RATES OF CHILDREN





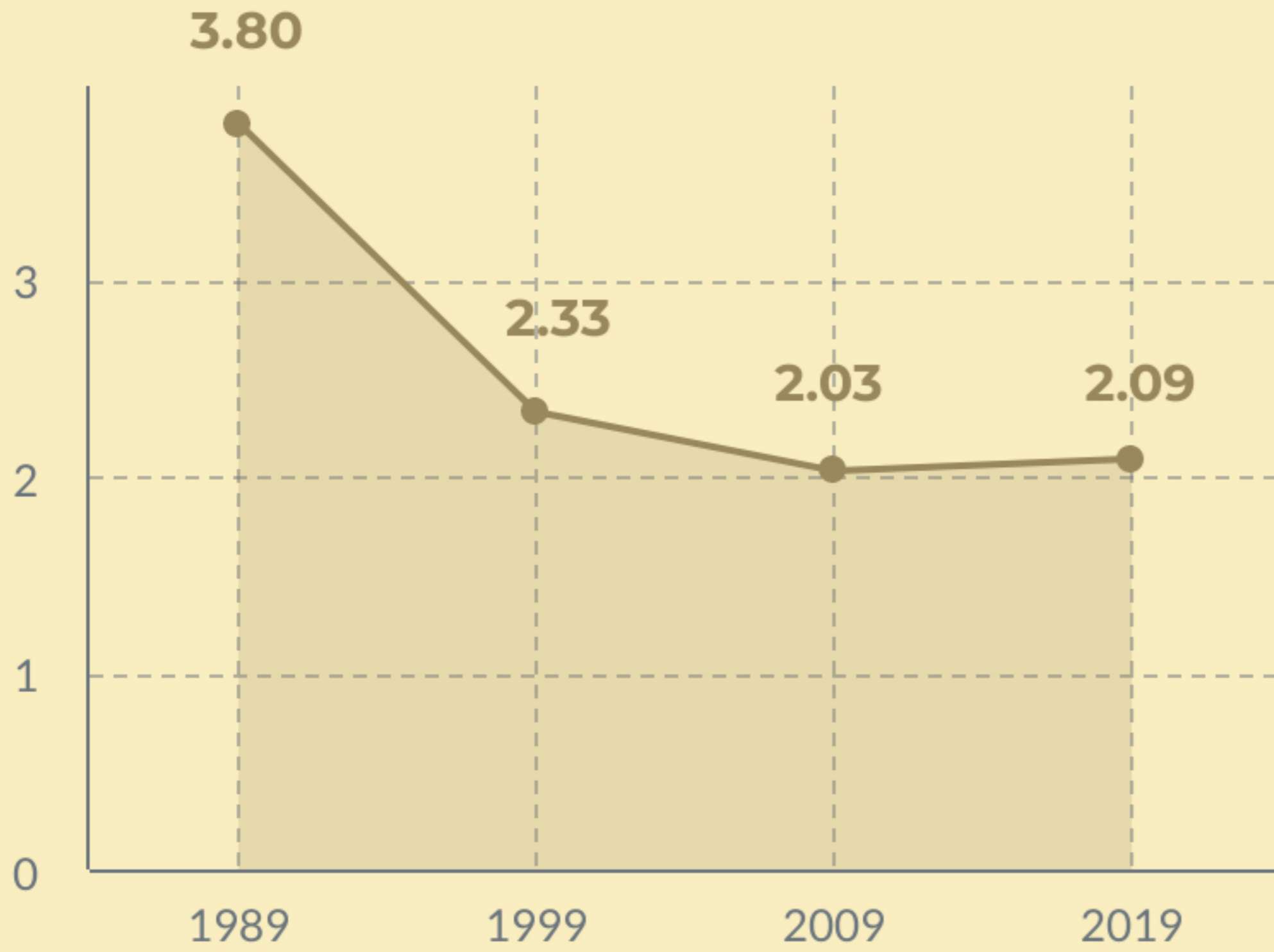
# FERTILITY



# MORTALITY

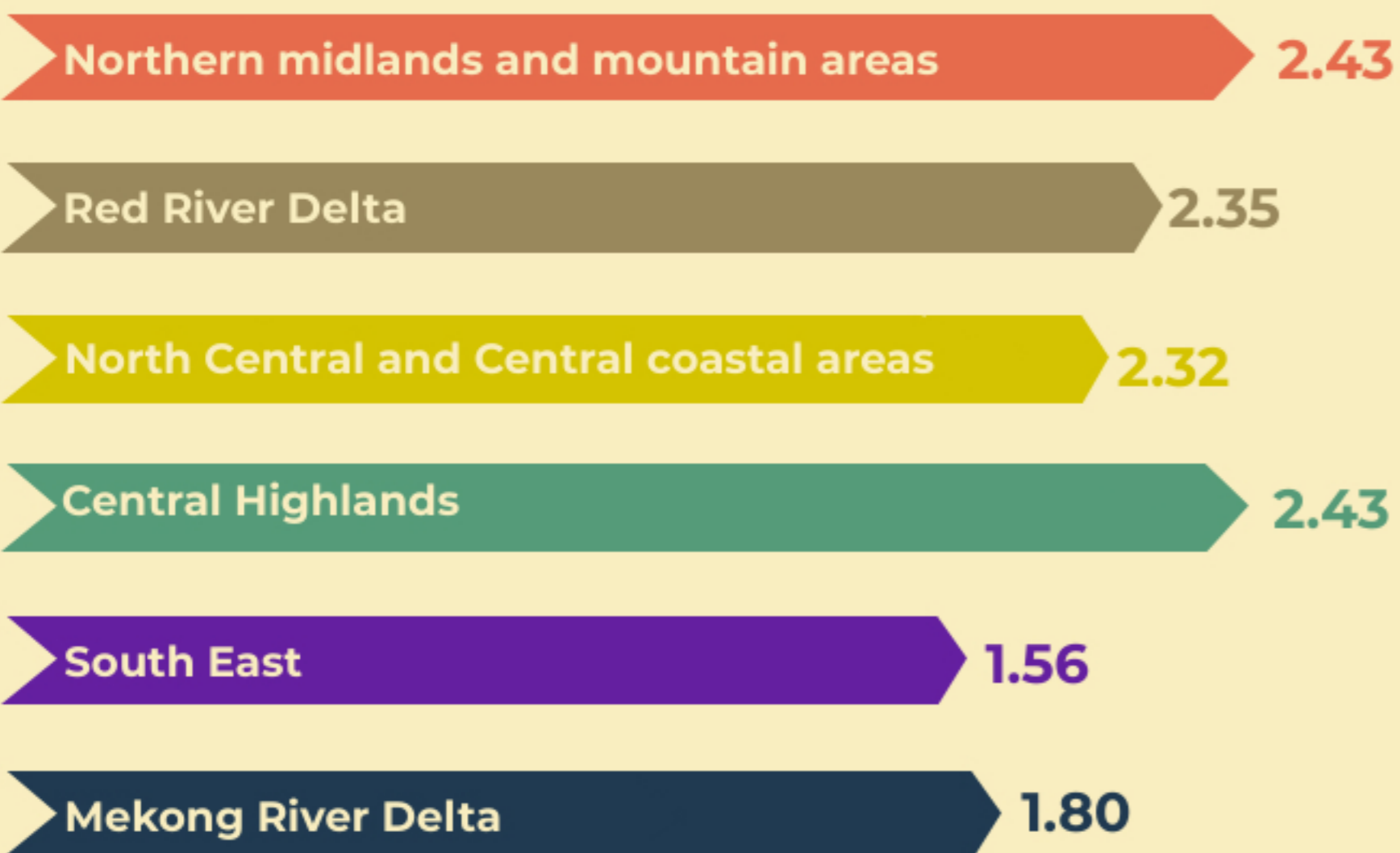
## 6 TOTAL FERTILITY RATE

Unit: Children/Woman



## Total fertility rate by social economic region

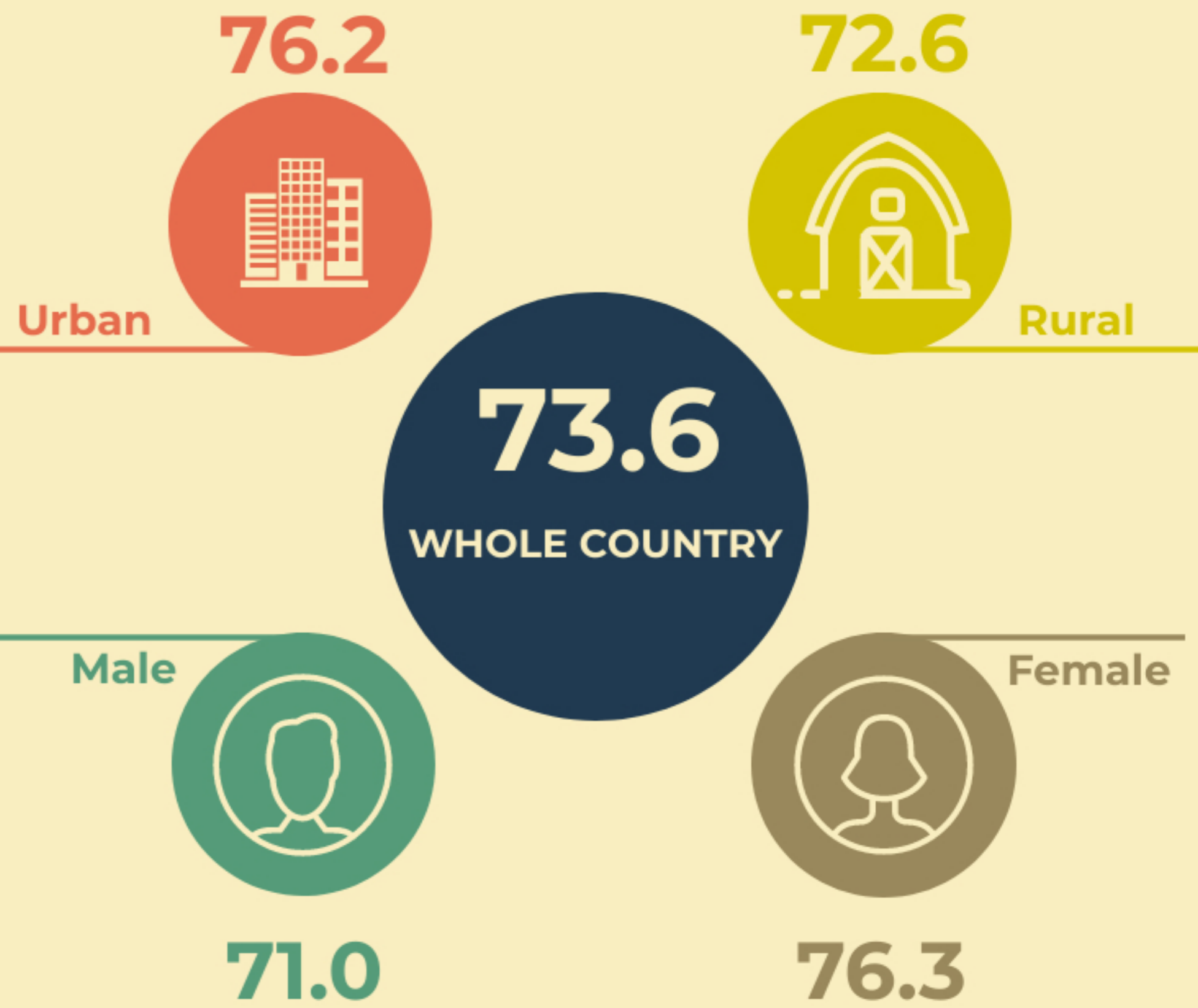
Unit: Children/Woman



## 7 SEX RATIO AT BIRTH

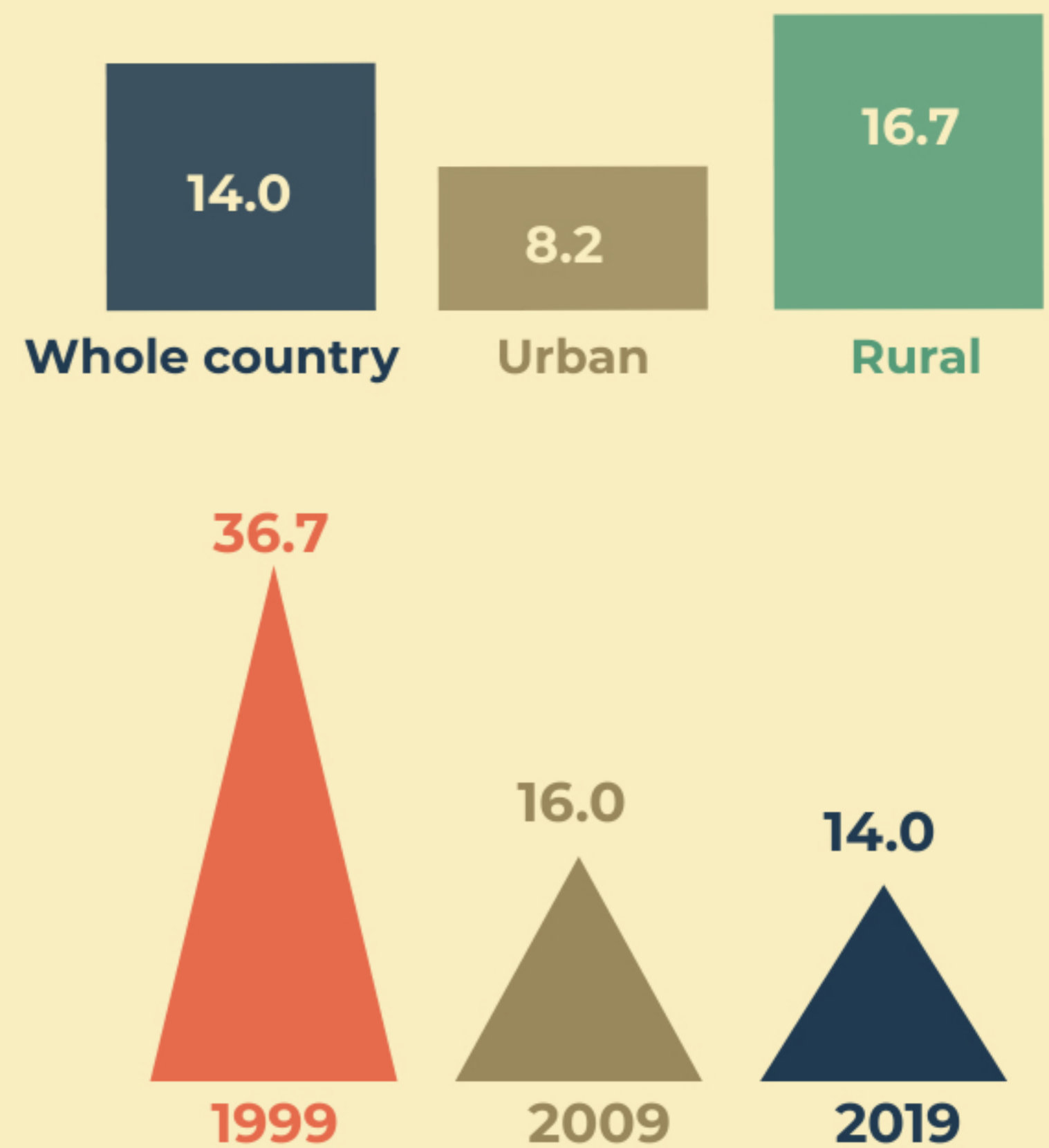


## 8 LIFE EXPECTANCY AT BIRTH



## 9 INFANT MORTALITY RATE

Unit: Number of deaths of children under age 1/1000 live births



## 10 MATERNAL MORTALITY RATIO (2009 AND 2019)

